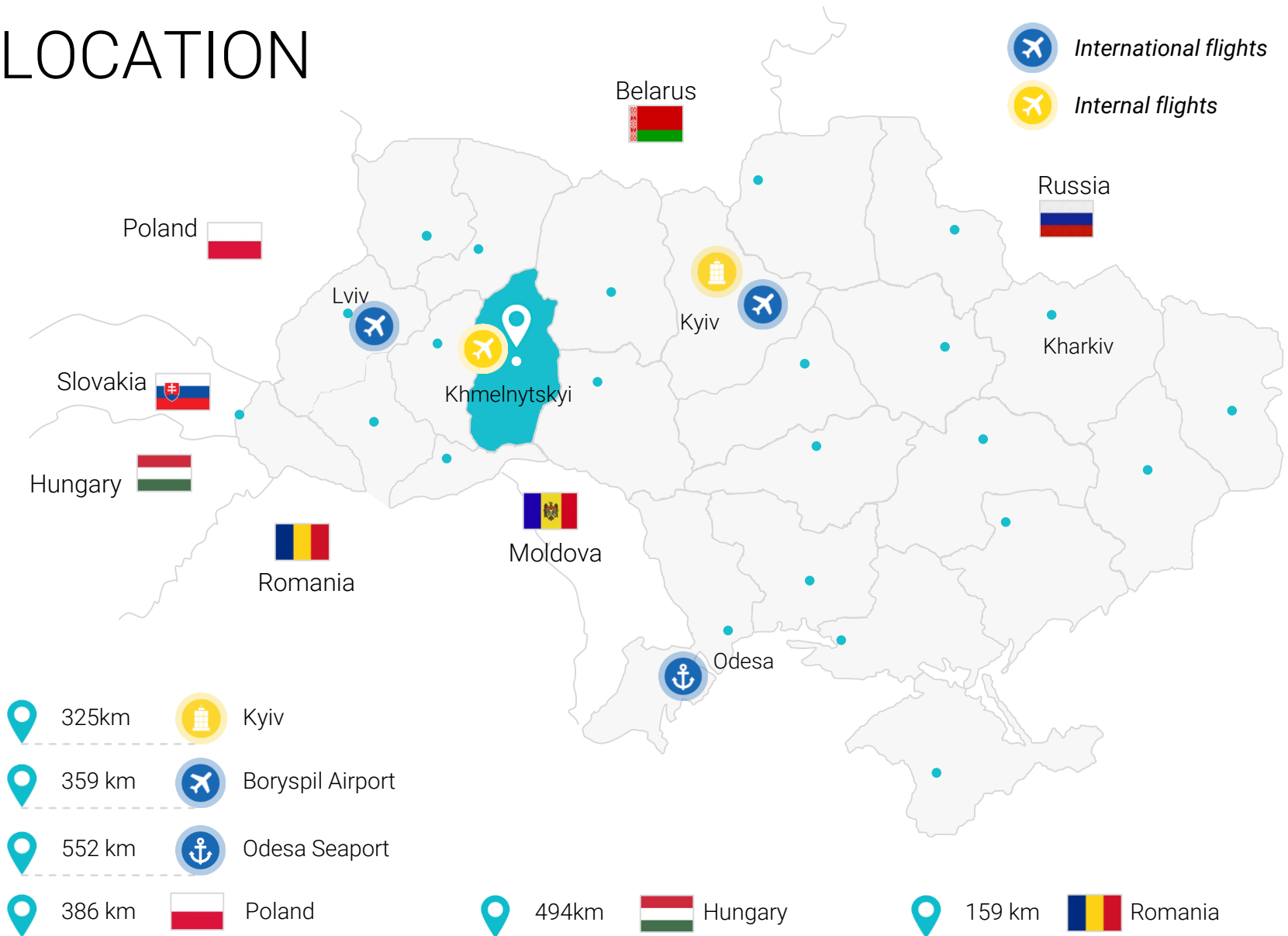
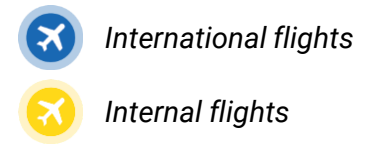


**UkraineInvest**  
Your Investment Matters

KHMELNYTSKYI

REGION OVERVIEW

# LOCATION



# HUMAN CAPITAL

**UkraineInvest**  
Your Investment Matters

## POPULATION IN THE REGION



**1.29 m**

Khmelnyskyi 269k  
Kamianets-Podilskyi 101k  
Shepetivka 41k

## GROSS SALARY TO MOTIVATE NEW EMPLOYEES



Blue collar worker 12k UAH (≈ €411)  
Management 15k UAH (≈ €514)  
Average salary according to official statistics UAH 9.5K (≈ €325)

## AVAILABLE WORKFORCE



**549 k**

3.1% of total workforce in Ukraine

**8.3 %**

Average in Ukraine – 9.4%



## UNEMPLOYMENT RATE

## EDUCATION



**28**

**Technical schools**

8,900 students

5,400 graduates per year

**9**

**Universities**

25,800 students

6,900 graduates per year

## MAJOR UNIVERSITIES



Podilsky Technical  
University of  
Agrarian Science



Kamianets-Podilskyi  
National Ivan Ohienko  
University



Khmelnyskyi  
National University



# BUSINESS PROFILE



## SECTORAL SPECIALIZATION

- Agro (grain cultivation, orchading)
- Garment industry (clothing, textile)
- Tourism (recreation, jewish heritage)
- Energy (nuclear power plant in the region)



## NATURAL RESOURCES

- Saponite clay
- Granite
- Limestone
- Loam
- Glauconite
- Mineral groundwater

## MAJOR FOREIGN INVESTORS

